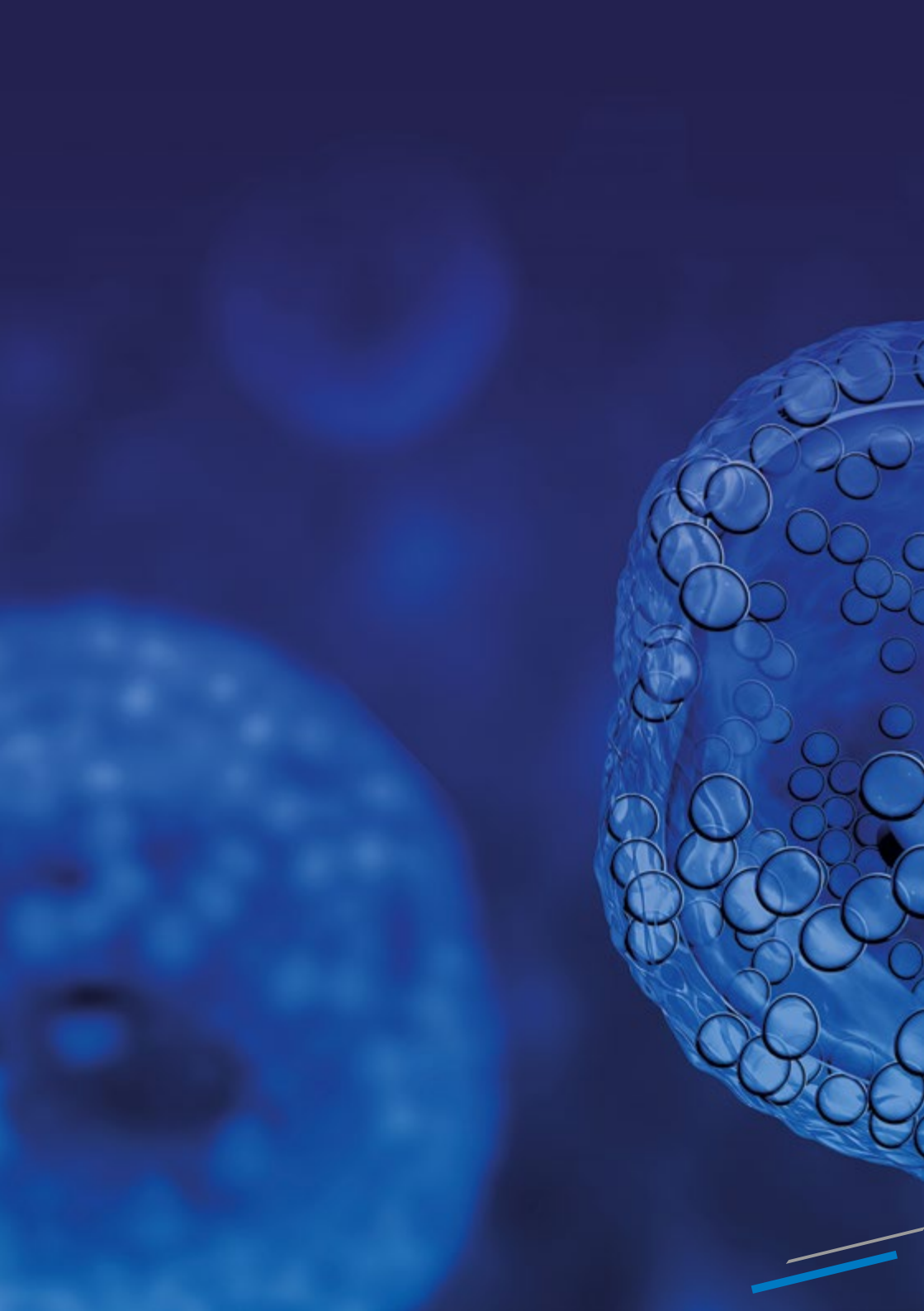


**EA4HP<sub>SH</sub> 2024**

22<sup>ND</sup> MEETING OF THE  
EUROPEAN ASSOCIATION  
FOR HAEMATOPATHOLOGY  
21-26 September 2024 | Dubrovnik, Croatia

**FINAL PROGRAMME.**





---

# TABLE OF CONTENT

<b>WELCOME ADDRESS</b>	<b>2</b>
<b>GENERAL INFORMATION</b>	<b>3</b>
<b>SCIENTIFIC PROGRAMME</b>	<b>6</b>
Scientific Programme Overview	6
Location Plan	8
Saturday, 21 September 2024	10
Sunday, 22 September 2024	14
Monday, 23 September 2024	22
Tuesday, 24 September 2024	28
Wednesday, 25 September 2024	34
Thursday, 26 September 2024	40
<b>SOCIAL EVENTS</b>	<b>45</b>
<b>SATELLITE SYMPOSIA</b>	<b>46</b>
Monday, 23 September 2024	46
Tuesday, 24 September 2024	46
Wednesday, 25 September 2024	47
<b>SPONSORS &amp; EXHIBITORS</b>	<b>48</b>
<b>IMPRINT</b>	<b>53</b>

---

## WELCOME ADDRESS

Dear colleagues and friends,

### WELCOME TO DUBROVNIK

On behalf of the European Association for Haematopathology (EA4HP) and the Society for Hematopathology (SH), we are honoured to welcome you at the 22nd Meeting of the EA4HP in Dubrovnik, Croatia. The meeting will take place at the Hotel Valamar Lacroma Conference Centre from 21st to 26th September 2024. This venue is one of the largest conference facilities in the region, located in a green oasis of the Babin kuk peninsula, 5 km from Dubrovnik's Old Town and approximately 20 km from the airport. For the participants unable to join us in Croatia, there will be an option to register for the hybrid event.

Our plans to host a meeting in Dubrovnik in 2020 were, unfortunately, hampered by the pandemic, so this time we are even more determined to organize a memorable event and live up to the expectations. For the first time this meeting is being held in Eastern Europe, in the medieval stone walled city with unique history and one of the UNESCO's World Heritage sites. After several years, we are proud to announce that the meeting will start with a Thymus Pathology Symposium, introducing the relevant scientific and clinico-pathological advances, followed by the traditional "Educational session" covering hot topics in hematopathology. The "Bone marrow day" will address challenging topics such as "Reactive and therapy induced changes" and myeloid neoplasms defined by evidence of cumulative effect of genetic alterations. With the main theme of the Lymphoma symposium "Novel mechanisms in lymphomagenesis", accompanied by a Lymphoma workshop focusing on the boundaries between neoplastic and reactive lymphoproliferations, this event will be an opportunity to take stock of the state of haematopathology today, address the current contentious diagnostic issues and point the direction of future research.

Dubrovnik is full of cultural and historical monuments dating back a thousand years, a city of festivals, museums, treasures and galleries. As always, the Organising Committee will provide an exciting social programme to complement the scientific sessions and facilitate professional networking. The Meeting Exhibition will be a great opportunity to see some of the latest technology used for diagnostic and research purposes, as well as offer information and advice to help you integrate it into your everyday practice. We look forward to seeing you in Dubrovnik.



A handwritten signature in black ink, appearing to read 'Snjezana Dotlic'.

**Snjezana Dotlic**

Chair Local Organiser

On behalf of the Organising Committee

---

## GENERAL INFORMATION

### CME Accreditation and Certificates

The congress has been accredited by the EACCME® for a maximum of 34 European CME credits (ECMEC®s). In order to receive credits, delegates will need to complete an online survey at the end of the meeting. Details of how this can be done will be emailed to you after the end of the congress.

### Important Numbers

Police 192

General Emergency Number  
112

Taxi +385 95 557 7877 / +385  
91 591 7014 / +385 99 200 0498

### Industry Exhibition

Please visit our industry exhibitors at their booths in the exhibition area on floor -1 (business center).

### Opening Hours

Saturday, 21 September 2024  
13.00–18.30

Sunday, 22 September 2024  
8.30–19.00

Monday, 23 September 2024  
8.30–18.30

Tuesday, 24 September 2024  
8.30–16.30

### Media Library

Shortly after the congress, attendees will have access to the media library on our virtual platform.

All presentations approved by the speakers except Meet the Professor and selected Satellite Symposia will be recorded. Kindly note that access depends on the registration

category. The media library will be available until 31 December 2024.

### Mobile phone use, photography, sound and video recordings

Mobile phones must be switched off whilst attending sessions. For copyright reasons, audio, photo and video recording with any device (e.g. cameras, laptops, PDAs, mobile phones, watches) is strictly prohibited during all oral and poster sessions, unless prior permission has been obtained from the congress organiser.

### Name Badges

All delegates, exhibitors and guests will receive a name badge at the registration desk. The name badge is the official ticket and must be worn at all times to access meeting rooms and exhibition halls. In case you have lost your badge, please contact the help desk.

### Poster Exhibition

The poster exhibition is located at the end of the Elafiti Conference hall Foyer on floor -2.

### Poster Presentations

#### Bone Marrow:

Sunday, 22 September 2024  
from 12.00 to 13.00

#### Lymphoma:

Monday, 23 September 2024  
from 10.30 to 11.15 and  
15.30 to 16.00

Tuesday, 24 September 2024  
from 10.15 to 11.00

## GENERAL INFORMATION

By scanning the QR code next to the poster, you will be linked to the EA4HP-SH virtual platform where you can view selected poster mini presentations online. Please make sure to have your log in credentials for the virtual platform that were sent to you via email already.

### Programme Changes

The organiser reserves the right to make changes to the programme if necessary. No full or partial refunds are made to attendees in the event of cancellation or other changes to the programme.

### Registration Counter

The registration counter is located in the business centre on floor -1.

### Opening Hours

Saturday, 21 September 2024  
12.00–17.30

Sunday, 22 September 2024  
7.00–17.00

Monday, 23 September 2024  
7.00–17.00

Tuesday, 24 September 2024  
7.00–17.00

Wednesday, 25 September 2024  
8.00–15.00

Thursday, 26 September 2024  
7.30–14.30

### Speaker's Presentation Centre

The speaker's presentation centre is located in room Kalamota on floor -1 in the business centre. Speakers are requested to hand in their presentations (including all media files and

embedded fonts) on a USB-stick at least 2 hours before their talk. Speakers having a presentation during the first time slot in the morning are asked to hand in their slides the day before. Technicians will assist with the upload of your files and provide the opportunity to preview and/or edit the presentation if necessary. If you are unavoidably delayed, you must still go directly to the speaker's presentation centre. All presentations must be run via the central media system. Personal laptops cannot be connected.

### Opening Hours

Saturday, 21 September 2024  
12.30–17.30

Sunday, 22 September 2024  
7.00–18.00

Monday, 23 September 2024  
7.00–16.30

Tuesday, 24 September 2024  
7.00–16.30

Wednesday, 25 September 2024  
8.00–16.00

Thursday, 26 September 2024  
7.30–14.00

---

## COMMITTEES

### Local Organising Committee

Snjezana Dotlic, Croatia (Chair  
local organiser)  
Margareta Radic Antolic, Croatia  
Igor Aurer, Croatia  
Slavko Gasparov, Croatia  
Sandra Basic Kinda, Croatia  
Velibor Puzovic, Croatia

### Executive Committee

Stefan Dirnhofer, Switzerland  
Snjezana Dotlic, Croatia  
Leticia Quintanilla-Fend, Germany  
Maurilio Ponzoni, Italy  
Birgitta Sander, Sweden  
John Goodlad, UK  
Alexandra Traverse-Glehen, France  
Livia Raso-Barnett, UK  
Alexandar Tzankov, Switzerland  
James Cook, USA  
Lorenzo Leoncini, Italy  
Thomas Tousseyn, Belgium  
Patricia Groenen, The Netherlands  
Socorro Maria Rodriguez-Pinilla,  
Spain

### Lymphoma Workshop Panel Members

Leticia Quintanilla-Fend, Germany  
Stefan Dirnhofer, Switzerland  
Ioannis Anagnostopoulos, Germany  
James Cook, USA  
Maurilio Ponzoni, Italy  
Stefania Pittaluga, USA  
Camille Laurent, France  
Gorana Gasljevic, Slovenia  
Michiel van den Brand, The Netherlands  
Birgitta Sander, Sweden  
Olga Balague, Spain

### Bone Marrow Workshop Panel Members

Alexandar Tzankov, Switzerland  
Roos Leguit, The Netherlands  
Olga Weinberg, USA  
Alexandra Traverse-Glehen, France  
Leonie Saft, Sweden  
Anna Green, UK

### Legal Organiser (PCO)

MCI Deutschland GmbH  
MCI | Germany – Berlin  
Markgrafenstr. 56 | 10117 Berlin,  
Germany  
T: +49 30 204590  
F: +49 30 2045950  
ea4hp-sh@wearemci.com

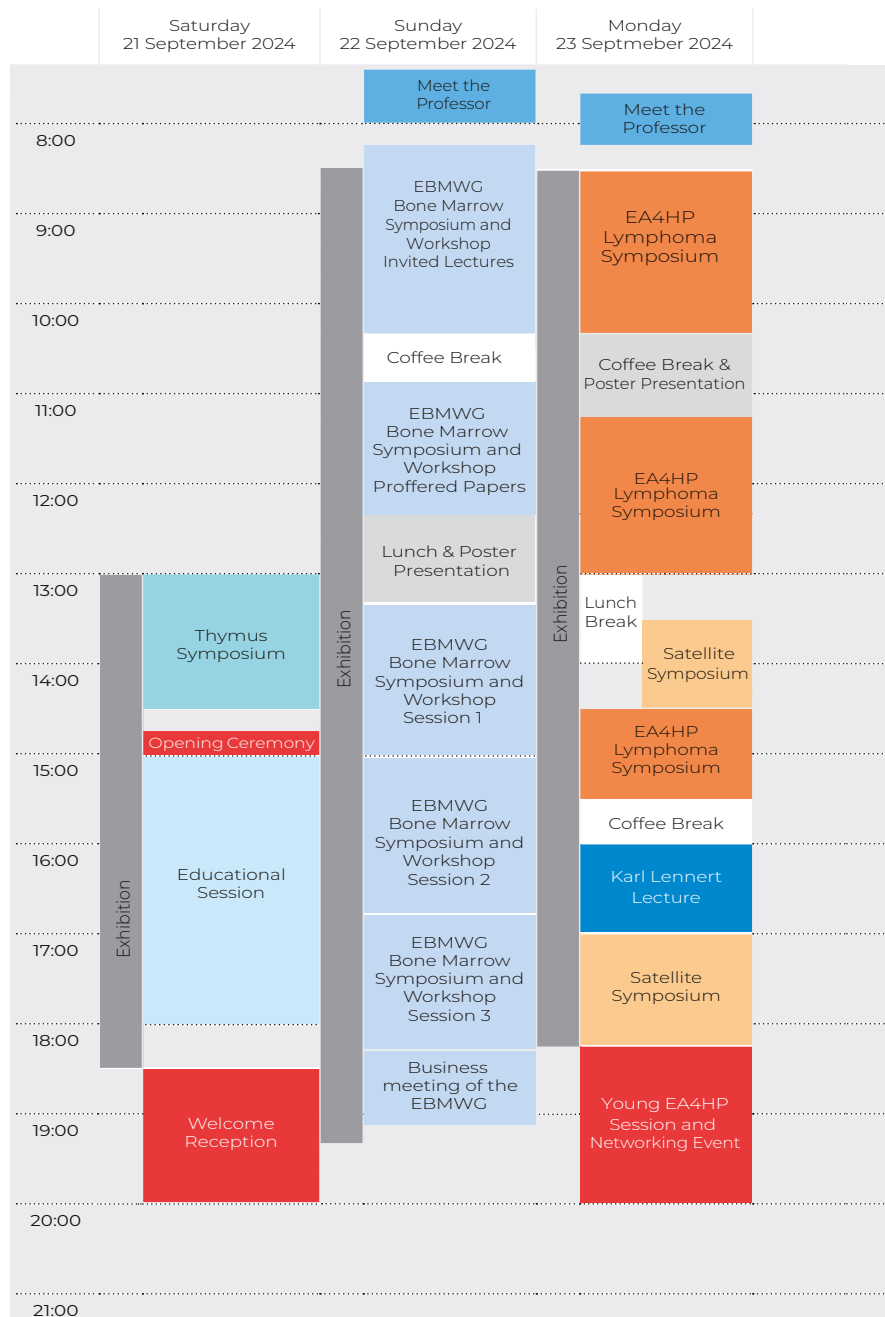
Project Management  
**Amira Hussein**  
ea4hp-sh@wearemci.com

Registration  
**Britta Löwe**  
registration.de@wearemci.com

Industrial Exhibition, Symposia and  
Sponsoring

**Kristina Van Cleave**  
**Thomas Reichau**  
eahp-sh-sponsoring@wearemci.com

# PROGRAMME OVERVIEW



- Meet the Professor
- Special Session
- Thymus Symposium

- Satellite Symposium
- EA4HP Lymphoma Symposium
- Others



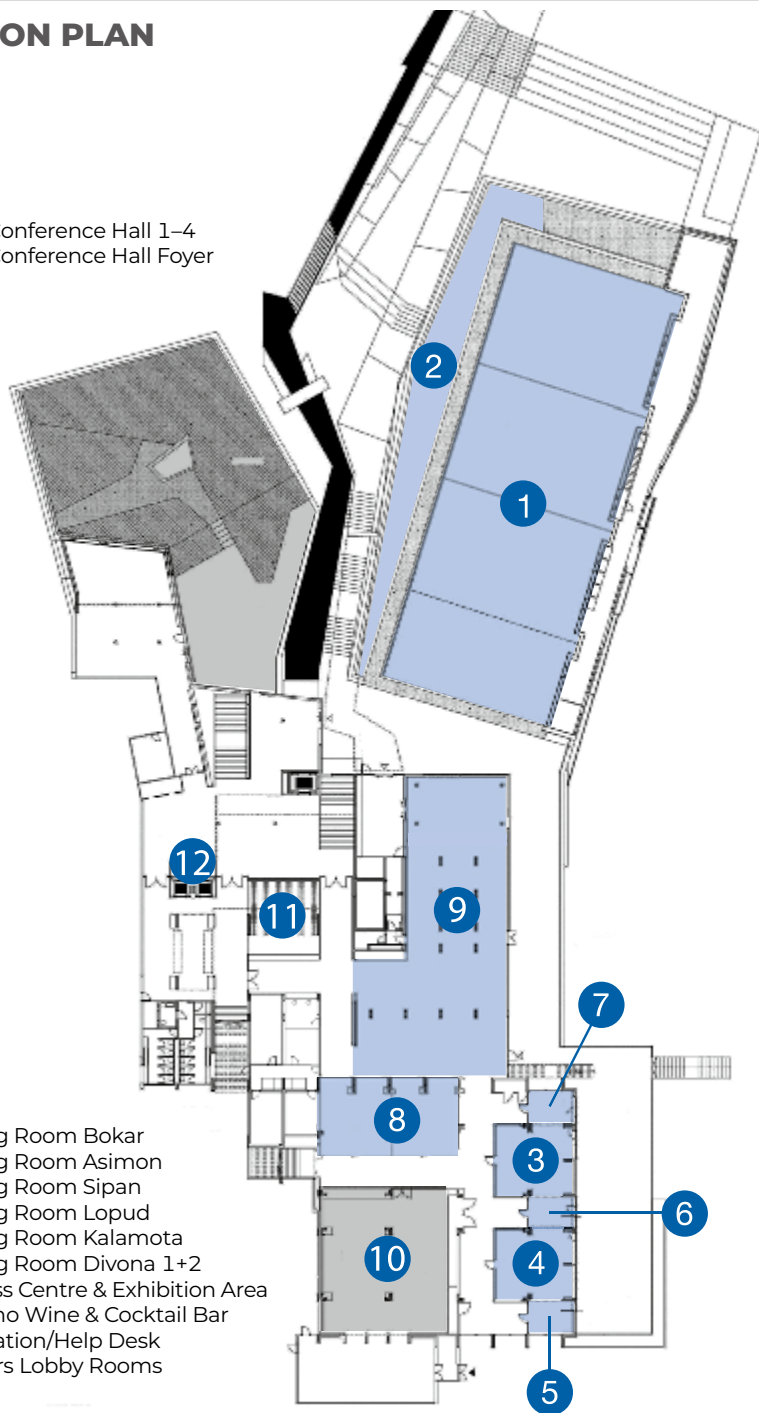
# PROGRAMME OVERVIEW

	Tuesday 24 September 2024	Wednesday 25 September 2024	Thursday 26 September 2024	
	Meet the Professor			8:00
Exhibition	EA4HP Lymphoma Symposium	EA4HP Lymphoma Symposium	EA4HP Lymphoma Workshop	9:00
	Coffee Break & Poster Presentation	Coffee Break	Coffee Break	10:00
	EA4HP Lymphoma Symposium	Satellite Symposium	EA4HP Lymphoma Workshop	11:00
		EA4HP Lymphoma Workshop		12:00
	Lunch Break	Satellite Symposium	Lunch Break	13:00
		Lunch Break	Lunch Break	14:00
	EA4HP Lymphoma Symposium	EA4HP Lymphoma Workshop	EA4HP Lymphoma Workshop	15:00
	David Y Mason Lecture		Closing Remarks	16:00
		Coffee Break		17:00
	General Assembly	EA4HP Lymphoma Workshop		18:00
			19:00	
	Networking Dinner		20:00	
			21:00	

- EA4HP Lymphoma Workshop
- Special Lecture
- EBMWG Bone Marrow Symposium and Workshop
- Poster Presentations

# LOCATION PLAN

- 1 Elafiti Conference Hall 1-4
- 2 Elafiti Conference Hall Foyer



- 3 Meeting Room Bokar
- 4 Meeting Room Asimon
- 5 Meeting Room Sipan
- 6 Meeting Room Lopud
- 7 Meeting Room Kalamota
- 8 Meeting Room Divona 1+2
- 9 Business Centre & Exhibition Area
- 10 Nocturno Wine & Cocktail Bar
- 11 Registration/Help Desk
- 12 Elevators Lobby Rooms

EA4HP<sup>SH</sup> 2026

[www.ea4hp-sh2026.com](http://www.ea4hp-sh2026.com)

SAVE  
THE  
DATE



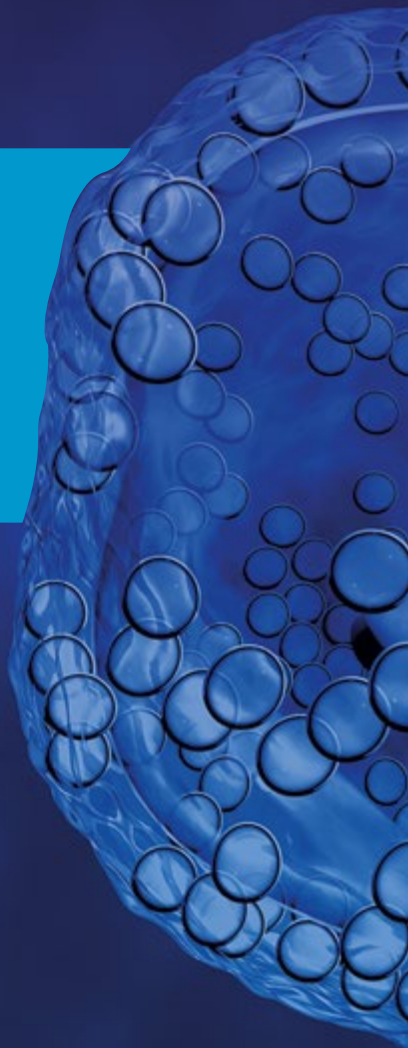
23<sup>RD</sup> MEETING OF THE EUROPEAN  
ASSOCIATION FOR HAEMATOLOGY  
3–8 October 2026 | Berlin, Germany

# PROGRAMME.

---

SATURDAY,

21 SEPTEMBER 2024



# PROGRAMME | SATURDAY, 21 SEPTEMBER 2024

**13.00–14.30**  
**Elafiti 1–4**

## **THYMUS SYMPOSIUM**

Chair: *Philipp Ströbel, University of Gottingen, Germany*

13.00–13.25

### **The WHO classification of thymic epithelial tumors**

*Alexander Marx, University of Gottingen, Germany*

13.25–13.30

### **Discussion**

13.30–13.55

### **Molecular drivers and therapeutic opportunities in thymomas**

*Philipp Ströbel, University of Gottingen, Germany*

13.55–14.00

### **Discussion**

14.00–14.25

### **Molecular and functional key features in thymic carcinomas**

*Iacopo Petrini, University of Pisa, Italy*

14.25–14.30

### **Discussion**

**14.45–15.00**  
**Elafiti 1-4**

## **OPENING CEREMONY**

*Snjezana Dotlic, University of Zagreb, Croatia*

*Stefan Dirnhofer, University Hospital Basel, Switzerland*

**15.00–18.00**  
**Elafiti 1-4**

## **EDUCATIONAL SESSION**

### **Practical application of molecular genetics in haematopathology**

Chairs:

*Leticia Quintanilla-Fend, University of Tübingen, Germany*

*Robert Hasserjian, Massachusetts General Hospital, Boston, USA*

15.00–15.30

### **NGS clonality advances and pitfalls (antigen receptors)**

*Patricia Groenen, Radboud University Medical Centre*

*Niemejen, Netherlands*

15.30–16.00

### **Molecular genetics in the differential diagnosis of B-cell lymphomas**

*Elias Campo, Hospital Clinic, University of Barcelona, Spain*

16.00–16.30

### **Molecular genetics in the diagnosis of T-cell lymphomas**

*Philippe Gaulard, Henri Mondor University Hospitals, Créteil, France*

**16.30–17.00**

## **Coffee Break**

17.00–17.30

### **New technologies in the genomic evaluation of myeloid neoplasms**

*Eric Duncavage, Washington University School of Medicine in St Louis, USA*

---

## PROGRAMME | SATURDAY, 21 SEPTEMBER 2024

17.30–18.00

### **Molecular classification of MDS**

*Mario Cazzola, University of Rome Tor Vergata, Italy*

**18.30–20.00**

### **WELCOME RECEPTION**

**Terrace @  
Dubrovnik  
President**

---

# NOTES

A series of horizontal dotted lines for writing notes.

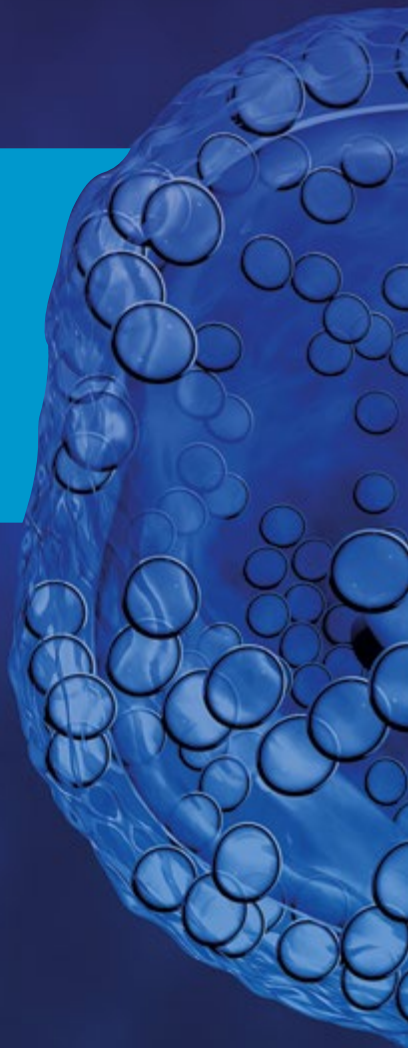


# PROGRAMME.

---

SUNDAY,

22 SEPTEMBER 2024





# PROGRAMME | SUNDAY, 22 SEPTEMBER 2024

## 7.15–8.00 MEET THE PROFESSOR: Parallel Sessions

7.15–8.00  
**Asimon** **My approach to the most challenging diagnostic issues in myeloid neoplasms**

*Daniel Arber, University of Chicago, USA*

7.15–8.00  
**Bokar** **Let's choose a (virtual) bone marrow biopsy algorithm: Together we will explore relevant issues related to design, validation and application of an AI in pathology, using bone marrow biopsies as a challenging example.**

*Konnie Hebeda, Radboud University Medical Centre, Nijmegen, Netherlands*

7.15–8.00  
**Divona 1** **Burkitt lymphoma: new data, differential diagnoses and beyond**

*Lorenzo Leoncini, University of Sienna, Italy*

7.15–8.00  
**Divona 2** **High grade B-cell lymphomas and the borderlands of DLBCL- what's in a name?**

*German Ott, Robert-Bosch-Krankenhaus, Stuttgart, Germany*

7.15–8.00  
**Olipa 1** **Cutaneous lymphoma: separating the sheep from the wolves however they are dressed**

**@ Presidents Hotel**  
*John Goodlad, NHS Greater Glasgow and Clyde, UK*

## 8.15–10.20 EBMWG BONE MARROW SYMPOSIUM AND WORKSHOP: Invited Plenary Lectures

Chairs:

*Leonie Saft, Karolinska University Laboratory, Stockholm, Sweden*

*Daniel Arber, University of Chicago, USA*

8.15–8.20 **Welcome Address**

*Alexandar Tzankov, University Hospital Basel, Switzerland*

8.20–9.00 **KEYNOTE LECTURE: Histiocytic proliferations in the bone marrow: a spectrum of reactive and clonal disorders**

*Falko Fend, University of Tübingen, Germany*

9.00–9.40 **KEYNOTE LECTURE: Progress in myeloid neoplasms: prognostic and therapeutic consequences of hierarchical molecular genetic classification of acute myeloid leukemia**

*Hartmut Döhner, University of Ulm, Germany*

9.40–10.20 **KEYNOTE LECTURE: The genomic basis and cell of origin of lineage ambiguous leukemias: implications for diagnosis**

*Charles Mullighan, St. Jude Children's Research Hospital Memphis, USA*

# PROGRAMME | SUNDAY, 22 SEPTEMBER 2024

**10.20–10.50**  
**Exhibition Area**

**Coffee Break**

**10.50–12.20**  
**Elafiti 1–4**

**Proffered Papers**

Chairs:

*Konnie Hebeda, Radboud University Medical Centre,  
Nijmegen, Netherlands*

*Robert Hasserjian, Massachusetts General Hospital, Boston,  
USA*

10.50–11.03

**BMS-O-1-1**

**Responses to avapritinib in patients with advanced systemic mastocytosis (AdvSM) histopathologic analyses from the explorer and pathfinder clinical studies**

*Tracy George, University of Utah School of Medicine,  
Salt Lake City, USA*

11.03–11.16

**BMS-O-1-2**

**Somatic mutations in FAS pathway increase hemophagocytic lymphohistiocytosis risk in T- and/or NK-cell lymphoma patients**

*Ying Liu, MSKCC, Pathology and Laboratory Medicine,  
New York, USA*

11.16–11.29

**BMS-O-1-3**

**Acute myeloid leukemia with mixed phenotype is characterized by *RUNX1* mutations, stemness features and limited lineage plasticity**

*Pallavi Galera, Memorial Sloan Kettering Cancer Center, New York, USA*

11.29–11.42

**BMS-O-1-4**

**Evidence that the *NPM1* mutant can be expressed in the nucleus, lost during tumor differentiation and that mature macrophages belong to the leukemic clone**

*Brunangelo Falini, Institute of Hematology and CREO,  
Perugia, Italy*

11.42–11.55

**BMS-O-1-5**

**Myeloid neoplasms with plasmacytoid dendritic cell proliferations: morphologic, immunophenotypic, and genetic comparisons between major diagnostic entities**

*Alexander Chan, Memorial Sloan Kettering Cancer Center,  
New York, USA*

## PROGRAMME | SUNDAY, 22 SEPTEMBER 2024

11.55–12.07

### **BMS-O-1-6**

#### **IKZF1 deletion status and correlation with cytogenetics and measurable residual disease in adult B lineage acute lymphoblastic leukemia**

*Sreejesh Sreedharanunni, Postgraduate Institute of Medical Education and Research, Chandigarh, India*

12.07–12.20

### **BMS-O-1-7**

#### **MECOM copy number gain in myeloid neoplasms is associated with Evi-1 overexpression, TP53 mutations, and poor survival**

*Nandan Padmanabha, Beth Israel Deaconess Medical Center, Boston, USA*

**12.20–13.20**

**Elafiti Conference Hall Foyer**

### **Poster Presentation**

Chairs:

*Julia Geyer, Weill Cornell Medical College New York, USA*

*Mats Ehinger, Lund University, Sweden*

**13.20–15.00**

**Elafiti 1–4**

### **Session 1: Reactive and therapy induced bone marrow changes linked to systemic infectious and non-infectious disorders including macrophage activation syndromes and hemophagocytic lymphohistiocytosis**

Chairs:

*Anna Green, St Thomas' Hospital London, UK*

*Roos Leguit, University Medical Centre Utrecht, Netherlands*

13.20–13.30

### **Introduction**

*Anna Green, St Thomas' Hospital London, UK*

*Roos Leguit, University Medical Centre Utrecht, Netherlands*

13.30–13.42

### **EA4HP24-BMWS-412**

#### **Suspected hemophagocytic lymphohistiocytosis in young patient with systemic lupus erythematosus**

*Megan Nakashima, Cleveland Clinic, Laboratory Medicine, Cleveland, USA*

13.42–13.54

### **EA4HP24-BMWS-11**

#### **Secondary hemophagocytic lymphohistiocytosis due to disseminated Histoplasmosis with underlying STAT1 mutation**

*David D. Grier, Cincinnati Children's Hospital Medical Center, USA*

## PROGRAMME | SUNDAY, 22 SEPTEMBER 2024

- 13.54–14.06 **EA4HP24-BMWS-398**  
**EBV-associated Hemophagocytic Lymphohistiocytosis with Monoclonal Expansion of T-cells in an Adolescent**  
*Mats Ehinger, Lund University, Sweden*
- 14.06–14.18 **EA4HP24-BMWS-433**  
**Hemophagocytic Lymphohistiocytosis associated with B-cell maturation antigen (BCMA)-directed chimeric antigen receptor (CAR) T cell therapy**  
*Faryal Fatima, Icahn School of Medicine at Mount Sinai Hospital, New York, USA*
- 14.18–14.30 **EA4HP24-BMWS-91**  
**Lenalidomide-associated B-ALL: a rare case with transient, spontaneous regression after discontinuing lenalidomide**  
*Wenbin Xiao, Pathology/Memorial Sloan Kettering Cancer Center, New York, USA*
- 14.30–15.00 **Case Summary and Conclusions**
- 15.00–16.40**  
**Elafiti 1–4**
- Session 2: Myeloid neoplasms with evidence of the additive and/or cumulative effect of molecular genetic alterations that have “paved the way” to a specific disease category, subcategory or entity**  
Chairs:  
*Alexandra Traverse-Glehen, University of Lyon, France*  
*Alexandar Tzankov, University of Basel, Switzerland*
- 15.00–15.10 **Introduction**  
*Alexandra Traverse-Glehen, University of Lyon, France*  
*Alexandar Tzankov, University of Basel, Switzerland*
- 15.10–15.22 **EA4HP24-BMWS-230**  
**Myeloproliferative Neoplasm NOS with CML-like features, novel *NUP214::POMT1*, *PRRC2B::ABL1* and *BCR::PRRC2B* fusions and complete response after imatinib therapy**  
*Humberto C. Carneiro, Sao Paulo, Brazil*
- 15.22–15.34 **EA4HP24-BMWS-182**  
**A young adult with Myelodysplastic/myeloproliferative neoplasm (MDS/MPN) with isolated iso17q, overt myelofibrosis and very short survival**  
*Dina S. Soliman, Hamad medical corporation, Doha, Qatar*

---

## PROGRAMME | SUNDAY, 22 SEPTEMBER 2024

15.34–15.46 **EA4HP24-BMWS-353**  
**HiJAKed by MPL: Genotypic and phenotypic evolution of a myeloid neoplasm**

*Matthew Shapiro, Mount Sinai Hospital, New York, USA*

15.46–15.58 **EA4HP24-BMWS-195**  
**Myelodysplastic Syndrome with Excess Blasts and Concurrent Smoldering Myeloma in a VEXAS Patient**

*Yanna Ding, NIH Clinical Center, Maryland, USA*

15.58–16.10 **EA4HP24-BMWS-292**  
**AML with *NPM1* mutation**

*Hira Qadir, Henry Ford Health Detroit, USA*

16.10–16.40 **Case Summary and Conclusions**

**16.40–18.20**  
**Elafiti 1–4** **Session 3: Myeloid and lymphoid early/undifferentiated precursor cell neoplasms and mixed phenotype acute leukemias**

Chairs:

*Olga Weinberg, UT Southwestern Medical School, Boston, USA*

*Leonie Saft, Karolinska University Laboratory, Stockholm, Sweden*

16.40–16.50 **Introduction**

*Olga Weinberg, UT Southwestern Medical School, Boston, USA*

*Leonie Saft, Karolinska University Laboratory, Stockholm, Sweden*

16.50–17.02 **EA4HP24-BMWS-33**  
**All mixed up: Acute leukemia with mixed phenotype, myelodysplasia-related cytogenetics, and *TP53* mutation**

*Nicholas C. Taylor, University of Vermont Medical Center, Burlington, USA*

17.02–17.14 **EA4HP24-BMWS-102**  
**Acute undifferentiated leukemia, an increasingly rare diagnosis**

*Alexandra E. Kovach, Children's Hospital Los Angeles, USA*

17.14–17.26 **EA4HP24-BMWS-152**  
**Mixed phenotype acute leukemia, T/myeloid, *BCL11B*-activated**

*Sanam Loghavi, University of Texas, Houston, USA*

---

## PROGRAMME | SUNDAY, 22 SEPTEMBER 2024

- 17.26–17.38      **EA4HP24-BMWS-104**  
**Early-T precursor lymphoblastic leukemia with *PICALM::MLLT10* fusion: a challenging diagnosis**  
*Judith Brody, Northwell Health, Greenvale, USA*
- 17.38–17.50      **EA4HP24-BMWS-415**  
**Distinct B/myeloid and T-lymphoblast populations at separate anatomic sites in mixed-phenotype acute leukemia with *BCR::ABL1* fusion**  
*Gina Sotolongo, Duke University Hospital, Durham, USA*
- 17.50–18.20      **Case Summary and Conclusions**
- 18.20–19.05      **Business meeting of the European Bone Marrow Working Group**  
*Alexandar Tzankov, University Hospital Basel, Switzerland*

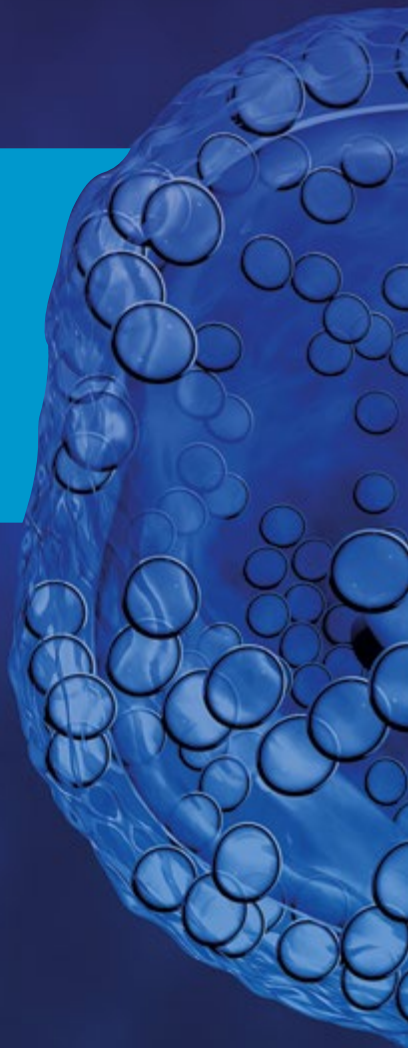


# PROGRAMME.

---

MONDAY,

23 SEPTEMBER 2024





# PROGRAMME | MONDAY, 23 SEPTEMBER 2024

7.30–8.15

## MEET THE PROFESSOR: Parallel Sessions

7.30–8.15

**Asimon**

### **My approach to the most challenging diagnostic issues in myeloid neoplasms**

*Daniel Arber, University of Chicago, USA*

7.30–8.15

**Bokar**

### **Let's choose a (virtual) bone marrow biopsy algorithm: Together we will explore relevant issues related to design, validation and application of an AI in pathology, using bone marrow biopsies as a challenging example.**

*Konnie Hebeda, Radboud University Medical Centre, Nijmegen, Netherlands*

7.30–8.15

**Divona 1**

### **High grade B-cell lymphomas and the borderlands of DLBCL- what's in a name?**

*German Ott, Robert-Bosch-Krankenhaus, Stuttgart, Germany*

7.30–8.15

**Divona 2**

### **Follicular-ish: approaching tricky variants and new classifications**

*Rebecca King, Mayo Clinic College of Medicine, Rochester, USA*

7.30–8.15

**Olipa 1**

**@ Presidents  
Hotel**

### **A modern approach to classification and diagnosis of peripheral T-cell lymphoma**

*Laurence de Level, University Hospital of Lausanne, Switzerland*

8.30–10.30

**Elafiti 1–4**

## LYMPHOMA SYMPOSIUM

### **Session I: Clonal lymphoid haematopoiesis**

Chairs:

*Snjezana Dotlic, University of Zagreb Medical School, Croatia  
Stefan Dirnhofer, University Hospital Basel, Switzerland*

8.30–8.35

### **Welcome Remarks**

*Snjezana Dotlic, University of Zagreb Medical School, Croatia  
Stefan Dirnhofer, University Hospital Basel, Switzerland*

8.35–8.45

### **In memoriam: Pr. Hans Konrad Müller-Hermelink**

*German Ott, Robert-Bosch-Hospital, Stuttgart, Germany*

8.45–9.15

### **KEYNOTE LECTURE: Lymphoid clonal hematopoiesis and its relationship to monoclonal B-cell lymphocytosis (Clonal Lymphoid haematopoiesis)**

*Aswin Sekar, Dana Farber Cancer Institute, Boston, USA*

## PROGRAMME | MONDAY, 23 SEPTEMBER 2024

9.15–9.45 **TOPIC LECTURE: Clonal lymphoid proliferations of uncertain significance**  
*Ahmet Dogan, Memorial Sloan Kettering Cancer Center, New York, USA*

9.45–10.00 **LYS-O-1-1**  
**Fusion gene landscape of peripheral T-cell lymphomas**  
*Baptiste Guey, Lausanne University Hospital, Lausanne, Switzerland*

10.00–10.15 **LYS-O-1-2**  
**Single cell sequencing reveals shared clonal signatures of non-malignant B and tumor cells in T- prolymphocytic leukemia**  
*Caroline Hesselager, Uppsala University, Sweden*

10.15–10.30 **LYS-O-1-3**  
**Association to both BCL2-positive and negative follicular lymphoma to or classic Hodgkin Lymphoma and/or Gray Zone Lymphoma**  
*Francisco Javier Diaz de la Pinta, Fundación Jimenez Diay, Madrid, Spain*

**10.30–11.15**  
**Exhibition Area & Elafiti Conference Hall Foyer**

### **Coffee Break and Poster Presentation**

Poster Chairs:

*Livia Raso-Barnett, Cambridge Universities Hospitals NHS Trust, UK (walk round)*

*Alexandra Traverse-Glehen, University of Lyon, France*

*Snjezana Dotlic, University of Zagreb Medical School, Croatia*

**11.15–13.00**  
**Elafiti 1–4**

### **LYMPHOMA SYMPOSIUM**

#### **Session II: New frontiers in the treatment of lymphoma**

Chairs:

*Gorana Gasljevic, Institute of Oncology Ljubljana, Slovenia*

*Philippe Gaulard, Henri-Mondor University Hospital, Creteil, France*

11.15–11.45

### **KEYNOTE LECTURE**

#### **Clinical importance of molecular classification of lymphomas**

*Igor Aurer, University of Zagreb, Croatia*

11.45–12.00

### **LYS-O-2-1**

#### **Acquired MYC Rearrangement contributes to Bruton Tyrosine Kinase Inhibitor Resistance in Mantle cell Lymphoma**

*Chang-Tsu Yuan, National Taiwan University Cancer Center, Taipei, Taiwan*

## PROGRAMME | MONDAY, 23 SEPTEMBER 2024

- 12.00–12.15 **LYS-O-2-2**  
**Classic Hodgkin Lymphomas with Syncytial Morphology Exhibit a Primary Mediastinal Large B-Cell Lymphoma-Like Expression Signature by Lymph3Cx Analysis**  
*Ryan Robetoyre, Mayo Clinic Arizona, Phoenix, USA*
- 12.15–12.30 **LYS-O-2-3**  
**Genetic subtyping by Whole Exome Sequencing across Diffuse Large B Cell Lymphoma and Plasmablastic Lymphoma.**  
*Santiago Montes-Moreno, Hospital Marqués de Valdecilla, Santander, Spain*
- 12.30–12.45 **LYS-O-2-4**  
**SOX11: An Achilles' heel of mantle cell lymphoma enhancing sensitivity to DNA damaging agents by impairing DNA repair.**  
*Mohammad Hamdy Abdelrazak Morsy, Karolinska Institute, Stockholm, Sweden*
- 12.45–13.00 **LYS-O-2-5**  
**Checkpoint inhibition enhances cell contacts between CD4+ T cells and Hodgkin-Reed-Sternberg cells of classic Hodgkin lymphoma**  
*Sylvia Hartmann, Goethe-University Frankfurt-am-Main, Germany*

**13.00–14.00** **Lunch Break**  
**Exhibition Area**

**14.30–15.30** **LYMPHOMA SYMPOSIUM**  
**Elafiti 1-4**  
**Session III: Genetics of lymphomas in children and young adults**  
Chairs:  
*Kennosuke Karube, University of the Ryukyus, Okinawa, Japan*  
*Thomas Tousseyn, University of Leuven, Belgium*

14.30–14.45 **LYS-O-3-1**  
**Mutational and transcriptional landscape of pediatric B-cell precursor lymphoblastic lymphoma**  
*Ingram Iaccharino, University of Kiel, Germany*

14.45–15.00 **LYS-O-3-2**  
**Pediatric-type follicular lymphoma lacks n-glycosylation sites and positive antigen selection despite ongoing somatic hypermutation**  
*Leonie Frauenfeld, Tübingen University, Germany*

## PROGRAMME | MONDAY, 23 SEPTEMBER 2024

15.00–15.15 **LYS-O-3-3**  
**Deciphering the molecular mechanisms behind *IRF4*-rearranged large B-cell lymphomas**  
*Ariadna Colmenero, Institut d'Investigacions Biomèdiques August Pi i Sunyer, Barcelona*

15.15–15.30 **LYS-O-3-4**  
**Lymphoma with concurrent *MYC* translocation and *11q* aberration: Burkitt lymphoma or not?**  
*Margherita Vannucchi, Siena University, Italy*

**15.30–16.00**  
**Exhibition Area & Elafiti Conference Hall Foyer**  
**Coffee Break and Poster Presentation**

**16.00–17.00**  
**Elafiti 1–4**  
**KARL LENNERT LECTURE**  
**Malignant Lymphomas. Where do we come from? What are we? Where are we going?**  
*Stefano Pileri, European Institute of Oncology, Milan, Italy*

**18.15–19.15**  
**Elafiti 1–4**  
**YOUNG EA4HP SYMPOSIUM**  
**Spatial biology approach to neoplastic haematopathology**  
Chairs:  
*Leonie Frauenfeld, Hospital Clinic Barcelona, Spain*  
*Luisa Lorenzi, University of Brescia, Italy*

18.15–18.20 **Introduction**  
*Leonie Frauenfeld, Hospital Clinic Barcelona, Spain*  
*Luisa Lorenzi, University of Brescia, Brescia, Italy*

18.20–18.42 **The use of spatial proteomics in hematopathology**  
*Christian Schürch, University of Tübingen, Germany*

18.42–19.04 **Spatial transcriptional programs of the germinal centre inform on B-cell lymphoma heterogeneity**  
*Claudio Tripodo, Università degli Studi di Palermo, Italy*

19.04–19.14 **General discussion on the Future role of spatial biology in Diagnostics**  
*Christian Schürch, University of Tübingen, Germany*  
*Claudio Tripodo, Università degli Studi di Palermo, Italy*  
*Laurence de Leval, University Hospital of Lausanne, Switzerland*

**19.15–20.00**  
**yEA4HP Networking Event**

---

## NOTES

A series of horizontal dotted lines for writing notes.

# PROGRAMME.

---

TUESDAY,

24 SEPTEMBER 2024



# PROGRAMME | TUESDAY, 24 SEPTEMBER 2024

7.30–8.15

## MEET THE PROFESSOR: Parallel Sessions

7.30–8.15

**Asimon**

### **Burkitt lymphoma: new data, differential diagnoses and beyond**

*Lorenzo Leoncini, University of Sienna, Italy*

7.30–8.15

**Bokar**

### **Follicular-ish: approaching tricky variants and new classifications**

*Rebecca King, Mayo Clinic College of Medicine, Rochester, USA*

7.30–8.15

**Divona 1**

### **Cutaneous lymphoma: separating the sheep from the wolves however they are**

*John Goodlad, NHS Greater Glasgow and Clyde, UK*

7.30–8.15

**Divona 2**

### **A modern approach to classification and diagnosis of peripheral T-cell lymphoma**

*Laurence de Leval*

*University Hospital of Lausanne, Switzerland*

7.30–8.15

**Olipa 1**

**@ Presidents**

**Hotel**

### **What's new about mediastinal grey zone lymphoma**

*Alexandra Traverse-Glehen, Hospices Civils de Lyon, France*

8.30–10.15

**Elafiti 1–4**

## LYMPHOMA SYMPOSIUM

### **Session IV: Epigenetics in lymphomagenesis**

Chairs:

*Reiner Siebert, University of Ulm, Germany*

*Elias Campo, University of Barcelona, Spain*

8.30–9.00

### **KEYNOTE LECTURE:**

#### **Beyond genetics: How the epigenome can contribute to the diagnosis and prognosis of lymphoid neoplasms**

*Jose-Ignacio Martin-Subero, University of Barcelona, Spain*

9.00–9.30

### **TOPIC LECTURE: Classification of hematolymphoid neoplasms by DNA methylation profiling**

*Saksena Annapurna, University of Pennsylvania, USA*

9.30–9.45

### **LYS-O-4-1**

#### **Genetically Divergent Routes to Lymphomagenesis associated with Epstein-Barr Virus (EBV)-positive Versus EBVnegative Classic Hodgkin Lymphoma (cHL)**

*Enrico Tiacci, University of Perugia, Italy*

## PROGRAMME | TUESDAY, 24 SEPTEMBER 2024

9.45–10.00

### **LYS-O-4-2**

**Semimethylation is a feature of Diffuse Large B-cell Lymphoma, and subgroups with poor prognosis are characterized by global hypomethylation and short telomere length**

*Magnus. Hultdin, Umea University, Sweden*

10.00–10.15

### **LYS-O-4-3**

**Dark zone Signature in diffuse large B-Cell Lymphoma of the German high-grade Lymphoma study group/German Lymphoma Alliance.**

*Anette Staiger, Robert-Bosch-Krankenhaus, Stuttgart, Germany*

10.15–11.00

**Exhibition Area  
& Elafiti Conference Hall Foyer**

### **Coffee Break and Poster Presentation**

Poster session chairs:

*Livia Raso-Barnett, Cambridge Universities Hospitals NHS Trust, UK*

*Alexandra Traverse-Glehen, University of Lyon, France*

*Snjezana Dotlic, University of Zagreb Medical School, Croatia*

11.00–13.00

**Elafiti 1–4**

### **LYMPHOMA SYMPOSIUM**

**Session V: Lymphoproliferations associated with germline abnormalities**

Chairs:

*Olga Weinberg, UT Southwestern Medical Center, Dallas, USA*

*Birgitta Sander, Karolinska Institute, Stockholm, Sweden*

11.00–11.30

### **KEYNOTE LECTURE:**

**Genetic susceptibility in B cell lymphoma**

*Qiang Pan-Hammarstrom, Karolinska Institute, Stockholm, Sweden*

11.30–12.00

### **TOPIC LECTURE:**

**Lymphoproliferation and Inborn Errors of Immunity : the pathologist's point of view**

*Thierry Molina, University of Paris, France*

12.00–12.15

### **LYS-O-5-1**

**Increased incidence of lymphomas in patients with Activated PI3k syndrome (APDS): a single center experience**

*Joao Alves de Castro, NIH/NCI Maryland, USA*

12.15–12.30

### **LYS-O-5-2**

**Unravelling the genetic basis of pediatric B-cell non-Hodgkin lymphoma pathogenesis in patients with underlying primary immunodeficiency**

*Sara Mato, IDIBAPS, Barcelona, Spain*



## PROGRAMME | TUESDAY, 24 SEPTEMBER 2024

12.30–12.45 **LYS-O-5-3**  
**Primary cutaneous follicle centre lymphoma- differential diagnostic and prognostic aspects**  
*Ágota Szepesi, Semmelweis University, Budapest, Hungary*

12.45–13.00 **LYS-O-5-4**  
**Molecular characterisation of Epstein–Barr virus in classic Hodgkin’s lymphoma**  
*Petra Korać, University of Zagreb, Croatia*

**13.00–14.30**  
**Lunch Break**  
**Exhibition Area**

**14.30–15.00**  
**Elafiti 1–4**  
**LYMPHOMA SYMPOSIUM**  
**Session VI: Recent Advances**  
Chairs:  
*Socorro Maria Rodriguez-Pinilla, University of Madrid, Spain*  
*Alexandra Traverse Glehen, University of Lyon, France*

14.30–14.45 **LYS-O-6-1**  
**Mutational profile of multifocal/recurrent extranodal marginal zone lymphoma of mucosa-associated lymphoid tissue; Insights into the clonal heterogeneity and disease progression**  
*Hee Kyung Kim, Soonchunhyang University, Bucheon, Korea*

14.45–15.00 **LYS-O-6-2**  
**The genetic landscape of primary breast marginal zone lymphoma identifies a mutational-driven disease with similarities to ocular adnexal and nodal marginal zone lymphoma**  
*Vanesa-Sindi Ivanova, Basel University, Switzerland*

**15.00–16.15**  
**Elafiti 1–4**  
**DAVID MASON LECTURE**  
Chairs:  
*Stefan Dirnhofer, University Hospital Basel, Switzerland*  
*Teresa Marafioti, University College London, UK*

15.00–15.10 **Poster Prize**

15.10–15.15 **David Mason Award 2024**

15.15–15.30 **David Mason Awardee 2022**  
**Role of microsatellite instability in the oncogenesis of primary intestinal T-cell lymphomas**  
*Luis Veloza, University of Lausanne, Switzerland*

---

## PROGRAMME | TUESDAY, 24 SEPTEMBER 2024

15.30–16.15

### DAVID MASON LECTURE

**Molecular and cellular mechanisms of thymic and post thymic T-cell development.**

*Carolyn King, University of Basel, Switzerland*

16.15–17.15

### GENERAL ASSEMBLY OF EA4HP

Elafiti 1–4

19.00–23.00

### NETWORKING DINNER

@ Copacabana

Beach

---

# NOTES

A series of horizontal dotted lines for writing notes, spanning the width of the page.

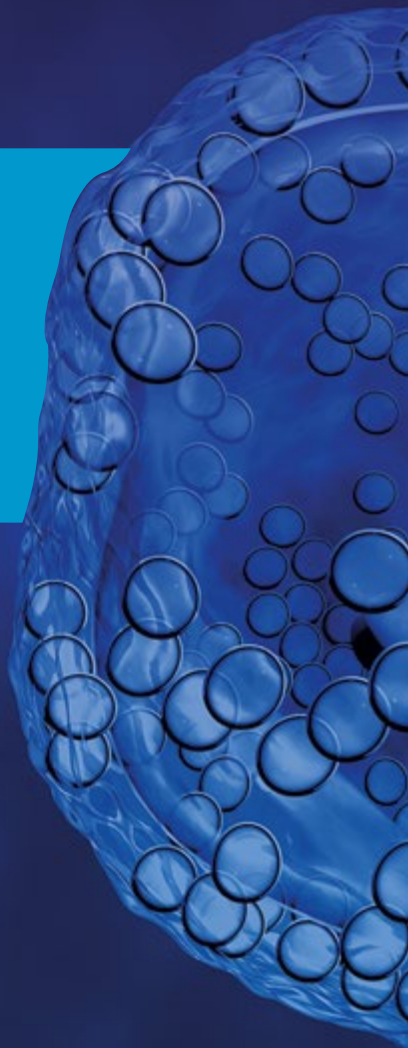


# PROGRAMME.

---

WEDNESDAY,

25 SEPTEMBER 2024



8.30–10.30  
Elafiti 1–4

**LYMPHOMA SYMPOSIUM:  
Session VII: Recent Advances**

Chairs:

*Laurence de Leval, University Hospital of Lausanne,  
Switzerland*

*Lorenzo Leoncini, University of Sienna, Italy*

8.30–9.00

**KEYNOTE LECTURE**

**Artificial intelligence and lymphoma diagnosis**

*Pierre Brousset, Paul Sabatier University, Toulouse, France*

9.00–9.15

**LYS-O-7-1**

**Spatial transcriptomes reveal the prognostic values and macrophages heterogeneity in Natural killer /T cell lymphoma**

*Siok-Bian Ng, National University Singapore, Singapore*

9.15–9.30

**LYS-O-7-2**

**Aggressive B-cell lymphomas with MYC-R single hit show Burkitt-like mutations in a subset of cases**

*Dominik Nann, Tübingen University, Germany*

9.30–9.45

**LYS-O-7-3**

**CCND1-Rearranged Large B-Cell Lymphomas Have Different IG Breakpoints and Genomic Profile Than Mantle Cell Lymphoma**

*Ece Ozogul, University of Barcelona, Spain*

9.45–10.00

**LYS-O-7-4**

**Cyclin D1 rearranged diffuse large B-cell lymphoma (DLBCL) – an evolving concept**

*Katrin Simone Kurz, Robert Bosch, Stuttgart, Germany*

10.00–10.15

**LYS-O-7-5**

**Multimodal spatial profiling reveals unique immunobiological features of EBV+ Hodgkin-like lymphoproliferations**

*Matthew Richard Pugh, University of Birmingham and Swansea Bay, Birmingham, UK*

10.15–10.30

**LYS-O-7-6**

**Identifying genomic abnormalities of aggressive B-cell lymphomas (BCLs) by optical genome mapping (OGM): A feasibility study with potential new discoveries**

*George Deeb, Emory University, Atlanta USA*

10.30–11.00  
Exhibition Area

**Coffee Break**

## PROGRAMME | WEDNESDAY, 25 SEPTEMBER 2024

12.00–13.00  
Elafiti 1–4

### Session I: The morphological spectrum of Castleman disease and related disorders Part I

Chairs:

*Stefan Dirnhofer, University Hospital Basel, Switzerland*  
*Corana Gasljevic, Institute of Oncology, Ljubljana, Slovenia*

12.00–12.05

#### Introduction to the Workshop

*Stefan Dirnhofer, University Hospital Basel, Switzerland*

12.05–12.15

#### Introduction to Session

*Arturo Bonometti, Humanitas University Milan, Italy*

12.15–12.27

#### EA4HP24-LYWS-101

##### Hyaline vascular Castleman disease, stroma-rich variant

*Chuan Chen, Mayo Clinic, Rochester, USA*

12.27–12.39

#### EA4HP24-LYWS-273

##### Idiopathic Castleman Disease, Plasma Cell Variant with Concurrent AA-type Amyloidosis and Sarcoidosis

*Zhihong Hu, The University of Texas MD Anderson Cancer Center, Houston, USA*

12.39–12.51

#### EA4HP24-LYWS-153

##### A Case of Idiopathic Multicentric Castleman Disease-TAFRO

*Meredith M. Nichols, Massachusetts General Hospital, Boston, USA*

12.51–13.03

#### EA4HP24-LYWS-326

##### POEMS syndrome presenting with Castleman disease

*Ion Prisnec, West Virginia University, Morgantown, USA*

13.03–14.05

#### Lunch Break

Exhibition Area

14.05–15.40  
Elafiti 1–4

### Session I: The morphological spectrum of Castleman disease and related disorders Part II

Chairs:

*Stefan Dirnhofer, University Hospital Basel, Switzerland*  
*Corana Gasljevic, Institute of Oncology, Ljubljana, Slovenia*

14.05–14.17

#### EA4HP24-LYWS-301

##### KSHV/HHV8-associated multicentric Castleman disease with two unusual features

*Marie Donzel, Hospices Civils de Lyon, Pierre Bénite, France*

# PROGRAMME | WEDNESDAY, 25 SEPTEMBER 2024

- 14.17–14.29 **EA4HP24-LYWS-103**  
**Multicentric Castleman disease with features suggestive of HHV8-positive large B-cell lymphoma vs extracavitary primary effusion lymphoma**  
*Hamza Tariq, Northwestern University, Chicago, USA*
- 14.29–14.41 **EA4HP24-LYWS-179**  
**KSHC/HHV8 and EBV-positive germinotropic lymphoproliferative disorder associated with Castleman Disease features**  
*Luisa Lorenzi, University of Brescia, Italy*
- 14.41–14.53 **EA4HP24-LYWS-73**  
**Follicular dendritic cell sarcoma associated with Castleman Disease**  
*Siok-Bian Ng, National University of Singapore, Singapore*
- 14.53–15.05 **EA4HP24-LYWS-20**  
**Idiopathic multicentric Castleman disease with massive infiltration of IgG4-positive plasma cells**  
*Kenosuke Karube, Graduate School of Medicine, Nagoya, Japan*
- 15.05–15.17 **EA4HP24-LYWS-325**  
**Thymic CHL masked by Castleman disease features such as extensive plasmacytosis**  
*George Terinte-Balcan, APHP, Necker and Robert Debré Hospitals, Paris, France*
- 15.17–15.40 **Summary**

**15.40–16.10**  
**Coffee Break**  
**Exhibition Area**

**16.10–18.10**  
**Elafiti 1–4**  
**Session 2: Atypical lymphoproliferations associated with germline or acquired genetic variants**  
Chairs:  
*Stefania Pittaluga, NIH/NCI Maryland, USA*  
*Birgitta Sander, Karolinska Institute, Stockholm, Sweden*  
*Michiel van den Brand, Radboud University Medical Center*

16.10–16.20 **Introduction**  
*Livia Raso-Barnett, Livia Raso-Barnett, Cambridge Universities Hospitals NHS Trust, UK*

16.20–16.32 **EA4HP24-LYWS-252**  
**Autoimmune Lymphoproliferative Syndrome in Adulthood: Navigating the Diagnostic Challenge between Atypical T-cell Proliferation and T-cell Lymphoma.**  
*Fina Climent, L'Hospitalet de Llobregat, Spain*

## PROGRAMME | WEDNESDAY, 25 SEPTEMBER 2024

- 16.32–16.44      **EA4HP24-LYWS-356**  
**Immunodeficiency-associated polyclonal lymphoproliferation in the setting of activated PI3K-delta syndrome**  
*Emily F. Mason, Vanderbilt University Medical Center, Nashville, USA*
- 16.44–16.56      **EA4HP24-LYWS-436**  
**EBV+ large B cell lymphoproliferation in an anal fissure uncovering X-linked lymphoproliferative disorder (XLP) in a 6-year-old boy**  
*Rossella Sarro, Ente Ospedaliero Cantonale, Locarno, Switzerland*
- 16.56–17.08      **EA4HP24-LYWS-119**  
**EBV-positive B-cell Lymphoma in a Patient with XMEN Disease**  
*Hariharan Bharadwaj, Mass General Brigham, Boston, USA*
- 17.08–17.20      **EA4HP24-LYWS-29**  
**Clonal Bronchopulmonary Lymphoplasmacytic Proliferation of Indeterminate Malignant Potential associated with Granulomatous Lymphocytic Interstitial Lung Disease (GLILD) in a patient with Common Variable Immune Deficiency (CVID)**  
*Barina Aqil, Northwestern University Feinberg School of Medicine, Chicago, USA*
- 17.20–17.34      **EA4HP24-LYWS-331**  
**Patient with ATM germline mutation and multiple clonal B-cell proliferations**  
*Ivonne A. Montes-Mojarro, University Hospital and Comprehensive Cancer Center Tuebingen, Germany*
- 17.34–17.46      **EA4HP24-LYWS-189**  
**Nodal T-follicular helper cell lymphoma and multiple concurrent EBV-positive B-cell lymphoproliferative disorders in a middle-aged man with a heterozygous germline TET2 mutation**  
*Wen-Hsuan Wendy Lin, Columbia University Medical Center, New York, USA*
- 17.46–18.10      **Summary**



---

# NOTES

Dotted lines for note-taking.

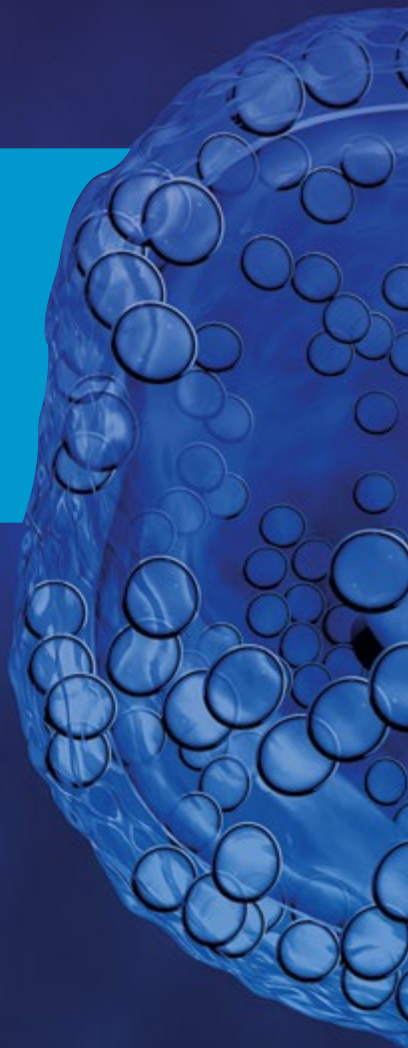


# PROGRAMME.

---

THURSDAY,

26 SEPTEMBER 2024



# PROGRAMME | THURSDAY, 26 SEPTEMBER 2024

**8.00–10.00**  
**Elafiti 1–4**

## **Session 3: Atypical lymphoproliferations associated with therapeutic interventions**

Chairs:

*James Cook, Cleveland Clinic, Ohio, USA*

*Ioannis Anagnostopoulos, University of Würzburg, Germany*

8.00–8.10

### **Introduction**

*Tanja Lakic, Faculty of Medicine Novi Sad, Serbia*

8.10–8.22

### **EA4HP24-LYWS-379**

#### **Classic Hodgkin Lymphoma, EBV+ following immunomodulator (IL-23 inhibitor) therapy**

*Bhaumik Shah, Temple Health System, Philadelphia, USA*

8.22–8.34

### **EA4HP24-LYWS-193**

#### **Atypical lymphoproliferation of non-canonical T follicular helper (Tfh) cells associated with etanercept and probably also with methotrexate therapy**

*Jagmohan Sidhu, United Health Services Hospitals, Bing-hampton, USA*

8.34–8.46

### **EA4HP24-LYWS-208**

#### **HHV-6 Lymphadenitis with DRESS Syndrome—Another Lymphoma Mimic**

*Abdallah Flaifel, National Institutes of Health, Bethesda, USA*

8.46–8.58

### **EA4HP24-LYWS-172**

#### **EBV+ large T cell lymphoproliferative disorder following CART therapy for EBV+ diffuse large B cell lymphoma**

*Philip Bulterys, Stanford University School of Medicine, Stanford, USA*

8.58–9.10

### **EA4HP24-LYWS-262**

#### **Post-CD19-CAR-T therapy trans-differentiation of a transformed follicular lymphoma in to an undifferentiated malignant neoplasm of uncertain lineage**

*Alireza Torabi, University of Washington, Seattle, USA*

9.10–9.22

### **EA4HP24-LYWS-26**

#### **Chronic lymphocytic leukemia with pseudo-Richter transformation consistent with recent interruption of ibrutinib**

*Pedro Farinha, BC Cancer, Vancouver, Canada*

9.22–9.34

### **EA4HP24-LYWS-226**

#### **Dasatinib-associated lymphadenopathy**

*Masoud Movassaghi, Keck School of Medicine of USC (University of Southern California), Los Angeles, USA*

9.34–10.00

### **Summary**

# PROGRAMME | THURSDAY, 26 SEPTEMBER 2024

**10.00–10.28**      **Coffee Break**  
**Exhibition Area**

**10.28–11.47**      **Session 4: Indolent pediatric lymphomas/LPDs**  
**Elafiti 1–4**  
Chairs:  
*Maurilio Ponzoni, University Vita-Salute San Raffaele, Milan, Italy*  
*Olga Balagué, Hospital Clinic University of Barcelona, Spain*

10.28–10.38      **Introduction**  
*Leonie Frauenfeld, University of Tübingen, Germany*

10.38–10.50      **EA4HP24-LYWS-121**  
**Atypical Lymphoid Proliferation Mimicking Pediatric Nodal Marginal Zone Lymphoma**  
*Hariharan Bharadwaj, Massachusetts General Hospital, Boston, USA*

10.50–11.02      **EA4HP24-LYWS-202**  
**A case with hybrid features between pediatric-type follicular lymphoma (PTFL) and pediatric nodal marginal zone lymphoma (PNMZL)**  
*Huan ge Li, Fudan University Shanghai, China*

11.02–11.14      **EA4HP24-LYWS-430**  
**Follicular lymphoma, pediatric type, in a lymph node in the neck**  
*Jens Enoksson, Region Skåne, Lund, Sweden*

11.14–11.26      **EA4HP24-LYWS-371**  
**Extramedullary plasmacytoma in a child**  
*Ilske Oschlies, Department of Pathology, Kiel, Germany*

11.26–11.45      **Summary**

**11.50–13.00**      **Session 5: Lymphoid neoplasms with indolent behaviour (clonal lymphoproliferations with indolent behavior) Part I**  
**Elafiti 1–4**  
Chairs:  
*Leticia Quintanilla-Fend, University of Tübingen, Germany*  
*Camille Laurent, Toulouse University Hospital, France*

11.50–12.00      **Introduction**  
*Jan Bosch-Schips, Pathology, Hospital Universitari de Bellvitge-IDIBELL, Barcelona, Spain*

## PROGRAMME | THURSDAY, 26 SEPTEMBER 2024

- 12.00–12.12 **EA4HP24-LYWS-22**  
**Primary Cutaneous Marginal Zone Lymphoproliferative Disorder**  
*Alma R. Oskarsdottir, Mayo Clinic, Rochester, USA*
- 12.12–12.24 **EA4HP24-LYWS-47**  
**Primary cutaneous marginal zone lymphoma/lymphoproliferative disorder (lymphoid neoplasms, typically, with indolent behavior), EBV positive, with transformation to plasmablastic lymphoma**  
*Lori Soma, Duarte, City of Hope Medical Center, Duarte, USA*
- 12.24–12.36 **EA4HP24-LYWS-303**  
**Primary cutaneous marginal zone lymphoproliferative disorder with an associated clonal CD4-positive T-cell population**  
*Antonio Vogelsberg, University Hospital and Comprehensive Cancer Center*
- 12.36–12.48 **EA4HP24-LYWS-246**  
**Indolent T-lymphoblastic proliferation of the parotid gland**  
*Florian Pesce, Institut Paoli-Calmettes, Marseille, France*
- 12.48–13.00 **EA4HP24-LYWS-344**  
**A Synchronous Diagnosis of a Muscular Lymphoma-like T-cell Proliferation in a Patient with Tonsillar Squamous Cell Carcinoma: Coincidence or Causality?**  
*Marina Gómez Tena, Hospitalet de Llobregat, Spain*

**13.00–14.00** **Lunch Break**  
**Exhibition Area**

**14.00–15.25** **Session 5: Lymphoid neoplasms with indolent behaviour (clonal lymphoproliferations with indolent behavior) Part II**  
**Elafiti 1–4**  
Chairs:  
*Leticia Quintanilla-Fend, University of Tübingen, Germany*  
*Camille Laurent, Toulouse University Hospital, France*

14.00–14.12 **EA4HP24-LYWS-461**  
**An unusual indolent clonal T-cell LPD disorder of the GI tract**  
*Philippe Gaulard, Henri Mondor University Hospitals, Creteil, France*

## PROGRAMME | THURSDAY, 26 SEPTEMBER 2024

- 14.12–14.24      **EA4HP24-LYWS-364**  
**Indolent T-cell-lymphoma of the gastrointestinal tract with extraintestinal dissemination prior to histological and clinical progression**  
*Elena M. Gerhard-Hartmann, University of Wuerzburg, Germany*
- 14.24–14.36      **EA4HP24-LYWS-317**  
**Follicle Center Lymphoma of the Lower Female Genital Tract**  
*Vasiliki Leventaki, MD Anderson Cancer Center, Houston, USA*
- 14.36–14.48      **EA4HP24-LYWS-338**  
**Follicular extranodal lymphoma with *BCL2* and *CMYC* rearrangement**  
*Maria Recuero Pradillo, Hospital Universitario de Toledo, Spain*
- 14.48–15.00      **EA4HP24-LYWS-38**  
**46-year-old woman with in situ B-cell neoplasm with *MYC* rearrangement**  
*Mariko Yabe, Memorial Sloan Kettering Cancer Center, New York, USA*
- 15.00–15.25      **Summary**
- 15.25–15.45**  
**Elafiti 1–4**
- CLOSING CEREMONY**
- 15.25–15.40      **Final Remarks to the Workshop**  
*Stefan Dirnhofer, University of Basel, Switzerland*
- 15.40–15.45      **Farewell and Invitation to the next Meeting by the President**  
*Maurilio Ponzoni, University Vita-Salute San Raffaele, Milan, Italy*

---

## SOCIAL EVENTS

### Welcome Reception

Saturday, 21 September, 18.30–20.00

Terrace at Dubrovnik President Valamar Collection Hotel

At the end of the first meeting day, you are kindly invited to the Welcome Reception – taking place at the Terrace of the neighbouring Dubrovnik President Valamar Collection Hotel. It will be an enjoyable opportunity to meet and talk in person.

### Young EA4HP Gathering

Monday Sep 19, 18.15–19.15

Bar Nocturno @Congress Venue

Members of the yEA4HP are warmly invited to come together at the Bar Nocturno, located in the Business Area (Exhibition Area) after the scientific programme on Monday. Take the opportunity to meet your scientific fellows in-person and make new contacts.

### Networking Dinner

Tuesday 24 September, admission from 19.00 onwards

Open air @ Copacabana Beach

Ul. Ivana pl. Zajca, 20000, Dubrovnik

Join us for an unforgettable evening at Copacabana Beach, just 700 meters from the Congress Hotel, a convenient 10-minute walk away. This venue honours Dubrovnik's tradition by blending elegance with simplicity, creating a relaxing and inspiring atmosphere for all visitors. Don't miss this unique networking opportunity!

Please make sure that you have been registered in advance.

**Dress code:** smart casual

# SATELLITE SYMPOSIA

## Monday, 23 September 2024

**10.45–11.00**  
**Exhibition Hall**

**Invivoscribe**  
**LEVERAGING HIGHLY SENSITIVE NGS ASSAYS FOR CLONALITY, SHM AND MRD ASSESSMENTS**

**13.30–14.30**  
**Elafati 1–4**

**Takeda**  
**CD30 ASSESSMENT AND TARGETING IN LYMPHOMA – A CLINICAL-HEMATOPATHOLOGY ALIGNMENT**

*Chair: John Goodlad, NHS Greater Glasgow and Clyde, UK*

13.30–13.55

**Assessment of CD30 positivity on lymphoma cells and in lymphoma-supportive microenvironment**

*John Goodlad, NHS Greater Glasgow and Clyde, UK*

13.55–14.20

**CD30 as a therapeutic target**

*Igor Aurer, University Hospital Center Zagreb, Croatia*

14.20–14.30

**Discussion and audience questions**

**17.15–18.15**  
**Elafati 1–4**

**Thermo Fisher Scientific**  
**ADVANCES IN NEXT-GENERATION SEQUENCING FOR LYMPHOID MALIGNANCIES**

*Chair: Elias Campo, University of Barcelona, Spain*

17.15–17.25

**Opening remarks & introduction to next-generation sequencing (NGS) for lymphoid malignancies**

*Elias Campo, University of Barcelona, Spain*

17.25–17.45

**Overview of the Liverpool Lymphoid Network and NGS panel design**

*Geetha Menon, Liverpool Clinical Laboratories Liverpool, UK*

17.45–18.05

**The value of NGS: Results of clinical research study using the Liverpool Lymphoid Network Panel**

*Gerard Frigola, University of Barcelona, Spain*

18.05–18.15

**Discussion and audience questions**

## Tuesday, 24 September 2024

**13.00–14.00**  
**Elafati 1–4**

**Roche**  
**REVOLUTIONIZING HEMATOPATHOLOGY: THE ROLE OF AN ULTRASENSITIVE KAPPA AND LAMBDA DUAL ISH mRNA ASSAY IN LIGHT CHAIN RESTRICTION**

*Chair: Elaine S. Jaffe, National Cancer Institute Bethesda, Bethesda, Maryland, USA*



---

## SATELLITE SYMPOSIA

- 13.00–13.05 **Welcome and opening remarks**  
*Elaine S. Jaffe, National Cancer Institute in Bethesda, Bethesda, Maryland, USA*
- 13.05–13.25 **The importance of clonality detection in B-cell lymphomas and current challenges**  
*Lisa Rimsza, University of Arizona, Tucson, Arizona, USA*
- 13.25–13.45 **Changing diagnostic paradigms: A new dawn in determining clonality with case reviews**  
*Teresa Marafioti, University College London, London, UK*
- 13.45–14.00 **Panel Discussion**  
*Marta Cañamero, Roche GmbH, Penzberg, Germany*  
*Elaine S. Jaffe, National Cancer Institute in Bethesda, Bethesda, Maryland, USA*  
*Lisa Rimsza, University of Arizona, Tucson, Arizona, USA*  
*Teresa Marafioti, University College London, London, UK*

### Wednesday, 25 September 2024

- 11.00–12.00**  
**Elafati 1–4** **Recordati Rare Diseases**  
**CATCHING CASTLEMAN DISEASE PATIENTS-THE THEORY, POINTS OF COLLABORATION, AND LIVE PANEL DISCUSSION**  
*Chair: Elena Sabattini, University of Bologna, Bologna, Italy*
- 11.00–11.05 **WELCOME:**  
*Elena Sabattini, University of Bologna, Bologna, Italy*
- 11.05–11.25 **THEORY: Introduction to Castleman Disease (CD) and the histopathology which should indicate a suspicion of CD in the context of reactive lymphadenopathy**  
*Amy Chadburn, Cornell University, Ithaca, New York, USA*
- 11.25–11.45 **POINTS OF COLLABORATION: The typical CD workflow and how to collaborate with general pathologists and clinicians where a suspicion of CD exists**  
*Arianna di Napoli, Sant'Andrea Hospital and Sapienza University, Rome, Italy*
- 11.45–12.00 **LIVE Q&A: How can we work better with general pathology colleagues to make sure 'CD-suspicious' samples reach haematopathologists?**  
*Elena Sabattini, University of Bologna, Bologna, Italy*  
*Amy Chadburn, Cornell University, Ithaca, New York, USA*  
*Arianna di Napoli, Sant'Andrea Hospital and Sapienza University, Rome, Italy*

# SPONSORS & EXHIBITORS

## Sponsors

We gratefully acknowledge the support of our sponsors & exhibitors.

### Platinum Sponsors



Recordati Rare Diseases



Roche



Takeda Oncology  
and Seattle Genetics

### Gold Sponsors



ThermoFischer Scientific

### Silver Sponsors



3DHISTECH Ltd.

### Bronze Sponsors



Invivoscribe



Blueprint Medicines  
GmbH

### Other Sponsors

Altium International

EuroClonality

Genesis Pharma

KEFO

Milestone SRL

Merck/Cell Marque Tissue Diagnostics

Scopio Labs

West Medica

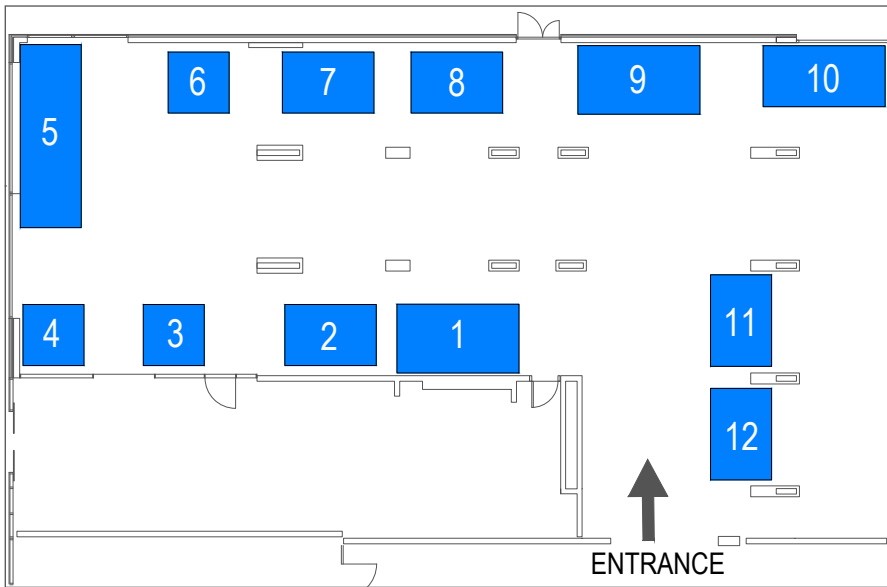
# SPONSORS & EXHIBITORS

## Exhibition

### Opening Hours

Saturday, 21 September 2024	13.00–18.30
Sunday, 22 September 2024	8.30–19.00
Monday, 23 September 2024	8.30–18.30
Tuesday, 24 September 2024	8.30–16.30

### Exhibition Floorplan



No.	Company Name
1	Altium International
2	Milestone SRL
3	EuroClonality
4	Genesis Pharma
5	3DHISTECH
6	Merck/ Cell Marque Tissue Diagnostics

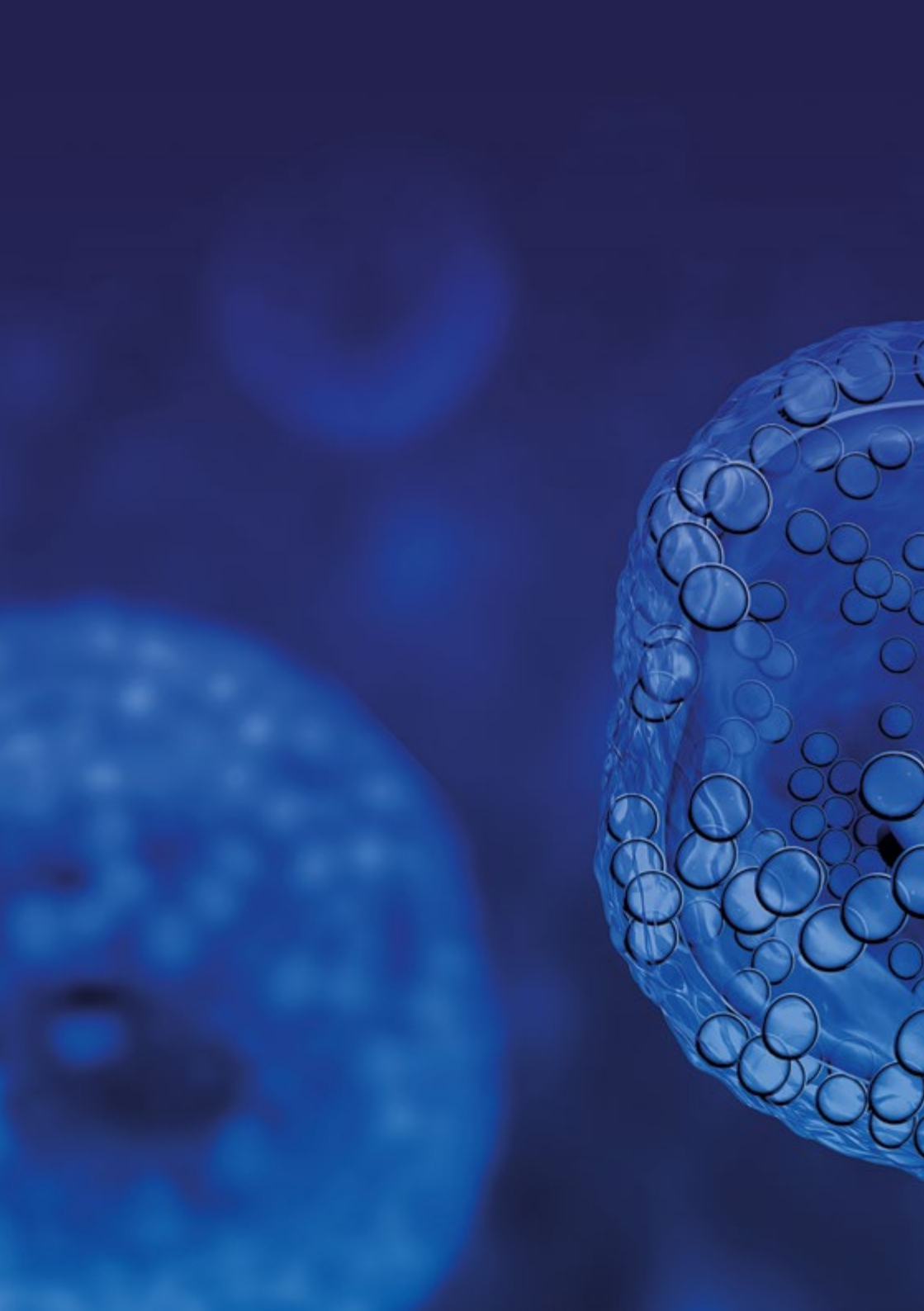
No.	Company Name
7	KEFO
8	Scopio Labs
9	West Medica
10	Invivoscribe
11	Young EA4HP
12	EA4HP

---

# NOTES

A series of horizontal dotted lines for writing notes, spanning the width of the page.





---

# IMPRINT

## Editors

European Association for Haematopathology

## President 2024

Stefan Dirnhofer  
Basel, Switzerland

## Local Organiser Chair 2024

Snjezana Dotlic  
Zagreb, Croatia

## Legal Organiser (PCO)

MCI Deutschland GmbH  
Markgrafenstraße 56  
10117 Berlin, Germany

## Congress Website

[www.ea4hp-sh2024.com](http://www.ea4hp-sh2024.com)

## Date of Publishing

20 September 2024

The programme indicated may be subject to change.

## Local Supporting Partner



# Did you know that ***KIT* D816V mutation is the primary driver of systemic mastocytosis disease?**<sup>1</sup>

***KIT* D816V mutation present in **~95%**  
of systemic mastocytosis cases<sup>1</sup>**

**High-sensitivity ddPCR  
and asoPCR methods are  
recommended for detection  
of *KIT* D816V mutation<sup>2</sup>**



High-sensitivity PCR techniques include digital droplet PCR (ddPCR) and allele-specific oligonucleotide PCR (asoPCR).

1. Bose P and Verstovsek S. *Expert Rev Hematol*. 2021;14:687–696;
2. Valent P et al. *J Allergy Clin Immunol Pract*. 2022;10:1999–2012.

Blueprint Medicines and the associated logo are trademarks of Blueprint Medicines Corporation.  
© 2024 Blueprint Medicines Corporation. INT-BP-MED-AVAASM-24016 | July 2024.

FOR HEALTHCARE PROFESSIONALS ONLY